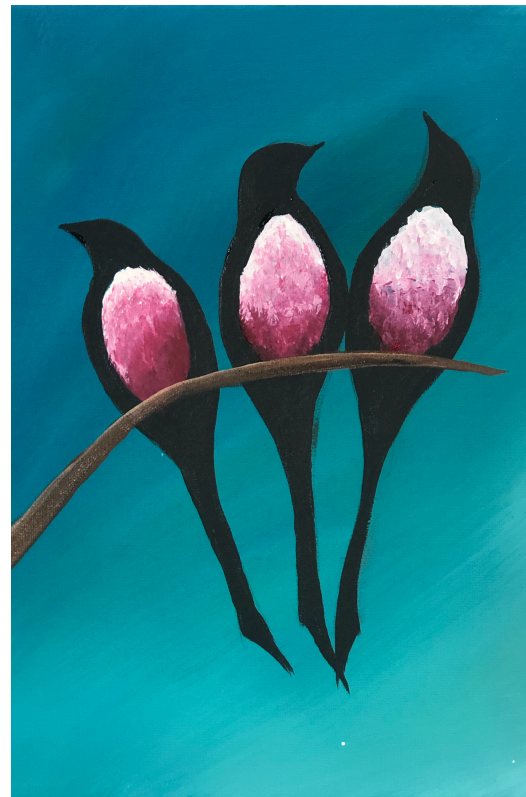
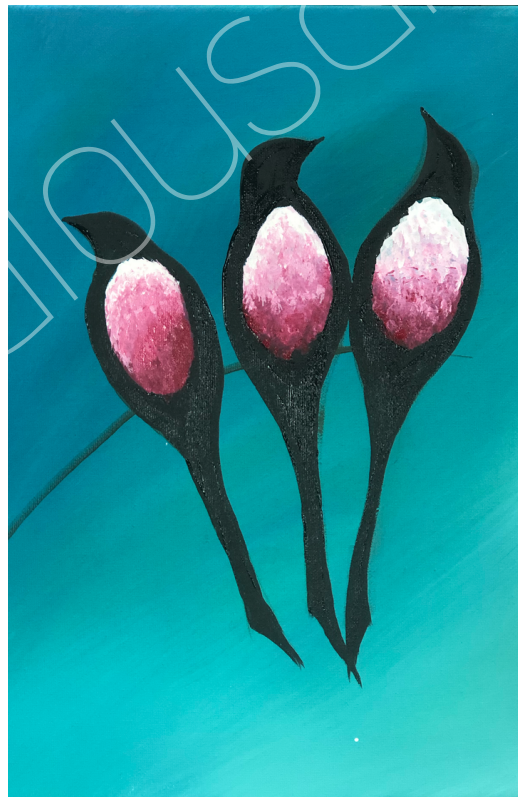
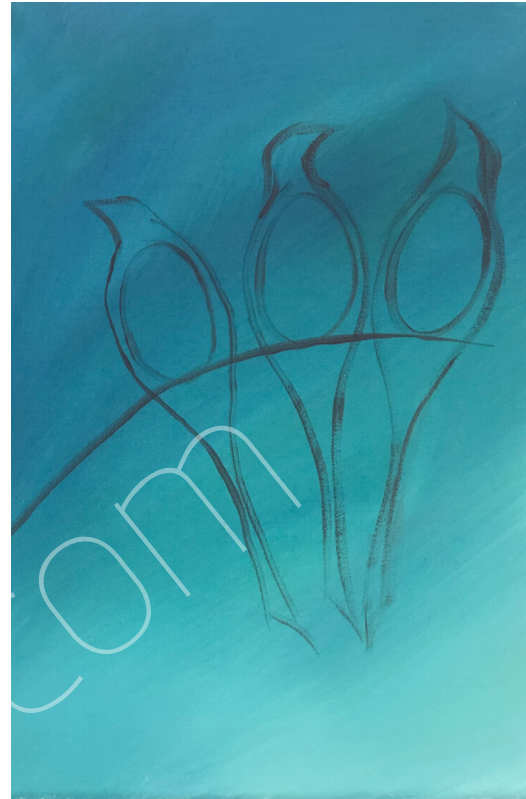
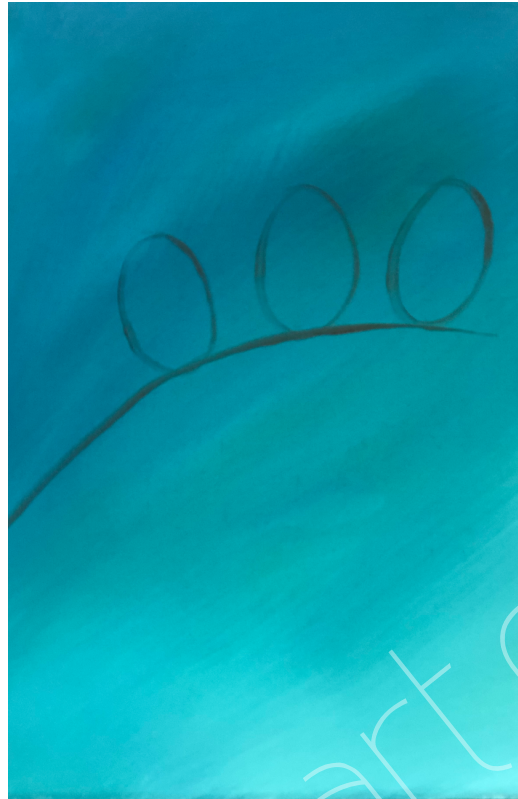
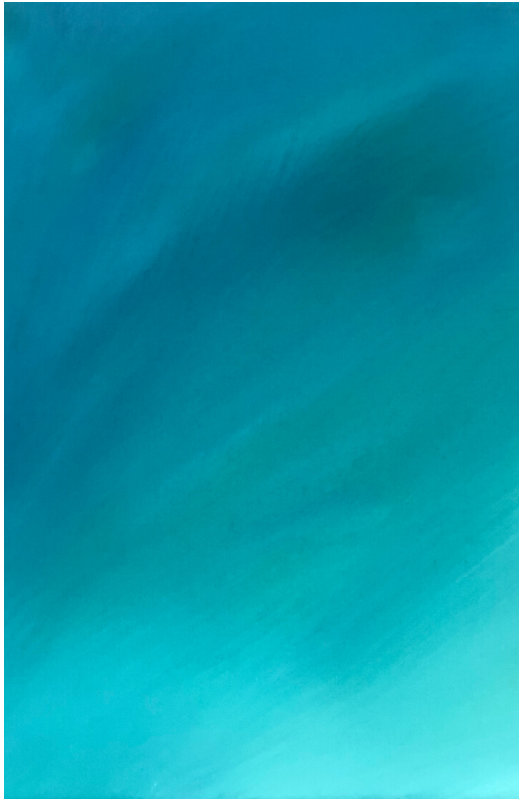


STEP BY STEP GUIDE



STEP BY STEP GUIDE

How to paint 3 birds on a branch



STEP BY STEP PAINTING GUIDE

How to paint 3 birds on a branch

Colours: Phthalo blue, Green, fire red, black and white (or any colours you want!)

Background: Load a large brush with white, blue and green. Do loose brush strokes to cover the background dipping in the different colours. More brush strokes will result in a more blended background. Less brush strokes will give you a more streaky background. I painted my background lighter at the bottom and darker at the top.

Birds: Draw a curved line near the centre of the canvas. Draw three egg shaped circles on top of the line where you want your birds. Draw the tails and heads. Shade the 'eggs' starting with white dabbing in the area shading from light to dark from the top to the bottom.

Branch: After painting the birdies, paint the branch in with brown. Remember branches are thicker closer to the tree and thinner as it grows out :) Use a little white to highlight the top of the branch to make it stand out ifo the birds.

